

New Zealand Miniature Horse Association Inc



The New Zealand Miniature Horse 2026 National Show “The Southern Showdown”

RDA Arena, Canterbury Park, Christchurch

Easter Weekend – 3rd April (Friday) – 6th April (Monday)

Judges

Teresa Visser - USA
Duane Stutzman - USA
Troy Murrell - USA

Show Manager/Convener – Amy Vujcich

Entries Officer – Penny Carmody

Protest Committee

(Show manager and 2 other NZMHA council members present on the ground who are not involved in the protest.)



Dear Members,

The Big Bang end to the season, where the best of the best gather for the great southern showdown!... It is with great delight that we present the 2026 New Zealand Miniature Horse Association Inc National Titles Show. We look forward to welcoming you to Christchurch for a big horse show, for little horses.

As always, our novelty classes (Costume) are FREE to enter.

We also have some new classes, and the return of some historic sections

The **2026 New Zealand Miniature Horse National Show** will be run in accordance with the official NZMHA Show Rule Booklet 2025/26 and will be conducted and judged in accordance therewith.

Please read these rules carefully to ensure you are eligible, and meet the criteria to enter any given class

Entry Forms - Are available along with request forms for camping and measuring on the NZMHA website (www.nzmha.co.nz) - see **Entry Supplement**.

Closing date for Entries - 17h00/5.00pm on Sunday 22nd March

Registration Upgrades - Please ensure you have all your upgrades up to date as incomplete applications will result in refusal of entries. No entries will be accepted with registrations "pending".

Camping - Is permitted on the showgrounds for: \$10 per night per person

If you do intend to camp on the grounds, please indicate the number of campers on the **Entry Supplement** and forward payment with your show entries.

Photographer - We are proud to welcome **Pollys Photography** as our official photographer for the weekend. Please respect her with professional courtesy and do not enter the ring to take photos.

Sunday Evening Dinner – NZMHA thank long term Supporters **Bill & Robyn Bell of Bayview Miniature Horses** for their past sponsorship. We take this opportunity to thank them for their support and generosity. If anyone is interested in taking over the sponsorship for this please contact Aaron.

Trade Sites - All trade sites need to book their space in advance by contacting **Aaron Harrison** (azza_333@hotmail.com).

Measuring - It is a requirement of the National Show Rules that **all foals, yearlings and 2-year-olds** are to be Height Verified at the show. **All Measuring will be at allocated times only** - this includes height verification for foals, yearlings and 2-year-olds. Refer to "**Measuring of Horses**" in this booklet for further information

Performance Cards - It is mandatory for all horses and handlers entering Novice classes to provide a copy of their performance cards **with their show entry**. Please make sure your horse's novice status is updated prior to the show as well as the Handler Cards. If you do not have a Handler card, you may get one from your Regional Delegate or the Show Convener. Although this show is zero rated for Hi Points, we do require proof of yours and your horse's Novice Status.

Trophy/Class Sponsorship Opportunities - This year we have a tiered sponsorship system; we have a range of opportunities to cater to most budgets. Your support is appreciated and helps to create a show to remember! A great way to promote your stud or business.

Queries directed to the Fundraising subcommittee - **Aaron Harrison, Jamie Norton, Fleur Horrocks or Bonni Harrison** (initial contact via azza_333@hotmail.com is preferred).

JUDGING SYSTEM - Placings are to 5th place.

The **2026 New Zealand Miniature Horse National Show** will have 3 judges who will judge the classes and an accumulated point system will be utilized. Horses placed under each judge will receive the following points allocations:

1st - 8pts	2nd - 7pts	3rd - 6pts	4th - 5pts	5th - 4pts	6th - 3pts	7th - 2pts	8th - 1pt
-------------------	-------------------	-------------------	-------------------	-------------------	-------------------	-------------------	------------------

Points earned by each horse from all judges will be added together to be the total score. The call judges placing will be used to break any ties.

Using the accumulated point system, placings will be awarded as the National Champion, National Reserve Champion and 3rd, 4th and 5th. The National Champion and National Reserve Champion will return for National Grand Champion and Reserve National Grand Champion.

For **Performance classes** that are judged on **scores** (ie showmanship, trail, hunter), each judge will place the National Champion, Reserve National Champion, top 3, top 4 places

The **scores** from these classes will determine the National Grand Champion and the Reserve National Grand Champion.

Supreme Performance Horse:

Classes to be counted

- Jumping
- Trail
- Harness (one harness, either Country or Single Pleasure, or Roadster)

Scaling shall be in accordance with Hi Point Rules and Scoring is as follows:

1st - 4pts	2nd - 3pts	3rd - 2pts	4th - 1pt
Champion - 4pts		Reserve Champion - 3pts	

Note: Champion will be awarded one more point than the Reserve Champion regardless of the number of horses in their class.

Programme of Events

Friday Morning – Start Time no earlier than 9:00am

Official Show Opening - Followed by a 15min break before Classes Start

Futurity
Junior Gelding Signature Championship
Breeders Showcase
3 x 1 Owner
Stud Awards
Progeny Classes

Friday Afternoon – Start Time 1:00pm

Youth Halter Cat A and B
Youth Harness Cat A
Youth Harness Cat B
Youth Trail Cat A
Youth Trail Cat B
Youth Hunter Cat A
Youth Hunter Cat B

Saturday Morning – Start Time no earlier than 8:30am

Cat A Harness
Cat B Harness
Cat A Trail
Cat B Trail
Cat A Hunter
Cat B Hunter

Saturday Evening – Start Time no earlier than 4:00pm

Youth Awards
Costume
Fashion In the field
Liberty

Sunday Morning – Start Time no earlier than 8:30am

Cat A Halter
Cat A Showmanship
Cat A Sweepstakes

Sunday Evening – Start Time TBC

Dinner

Monday Morning – Start Time no earlier than 8:30am

Cat B Halter
Cat B Showmanship
Cat B Sweepstakes

All Round Award Presentation
Official closing of the Show

NZMHA RESERVES THE RIGHT TO CHANGE THE PROGRAMME OR RUNNING OF THIS SHOW IN ANY WAY WITHOUT FURTHER NOTICE.

ANY CHANGES TO THE PROGRAMME WILL BE POSTED ON THE DAY AT THE INFORMATION DESK.

ALL ROUND AWARDS: The following points system will be allocated:

NZ National Grand Champion Best All Round Horse - Cat A and Cat B	1st - 5pts 2nd - 4pts 3rd - 3pts 4th - 2pts 5th - 1pt
NZ National Grand Champion Best All Round Heritage Horse - Cat A and Cat B	
NZ National Grand Champion Best All Round Junior Youth	
NZ National Grand Champion Best All Round Intermediate Youth	
NZ National Grand Champion Best All Round Senior Youth	

In the event of a tie the following count back will apply: most 1sts, followed by most 2nds etc down to 5th place. Points will be scaled in accordance with NZMHA Hi Point Rules.

Youth All Round Awards will tally the points accumulated in the Youth Classes only, Champions and reserve champions will count, 4 pts for champion, 3 points for reserve.

HUNTER AND TRAIL CLASSES

Please note that the open and novice classes for Trail and Hunter at the NZMHA National Show are run continuously and the ribbons are awarded at the completion of the open and novice classes.

SWEEPSTAKE CLASSES

Category A and Category B are separate classes. Open to any age or sex within that Category. Classes will be judged using the normal halter workout of the day.

All Entry Fee Sweepstakes Money and Sponsorship Monies will be paid out to the Top 10 horses in each Category.

1st - 25%	2nd - 20%	3rd - 15%	4th - 10%	5th-10th - 5%
------------------	------------------	------------------	------------------	----------------------

ENTRY AND REGISTRATION RULES

The **2026 New Zealand Miniature Horse National Show** is open to any horse registered with NZMHA which is owned and shown by a current financial member of NZMHA. Note for non NZMHA members to handle horses at the show they must be registered (**Handler Registration**) with NZMHA **BEFORE** the close of entry of the show and may not enter handler classes.

Handlers - Minimum age to compete is **5 years of age**.

A copy of the horse's current NZMHA height certificate and both sides of their registration certificate must be attached. Entry is deemed to be incomplete and may be refused if copies of these certificates are not enclosed. Where applicable, copies of NZMHA leases must also be provided at time of entry.

ENTRIES CLOSE 17h00/5:00pm on Sunday 22nd March

No Late Entries, No Exceptions

ENTRY FEES - Cost of Entries are GST inclusive	
Senior, Intermediate and Junior Youth Classes	\$5 Horse/Class - Capped at \$20 per horse
Youth Best All-Round Classes	\$5 Per Entry
Best All-Round Awards	\$10 Per Entry
Futurity Classes	\$15 Per Horse/Class
Sweepstakes	\$15 Per Horse/Class
All Other Classes (exc Novelty)	\$14 Per Horse/Class
Novelty Classes	FREE
Liberty	\$15 Per Horse
Ground Levy	\$10 Per Horse
Catalogue	\$8 Per Catalogue
Bank Account Details	NZ Miniature Horse Association Inc 03-1322-0746088-00 <i>Ref: Nationals</i>

North Island Members exhibiting will receive a 50% Discount on entry fees for horses not residing in the South Island or those horses that have been out on lease in the South Island for the preceding 6 months. This does not include the Futurity, Breeders, Liberty or Sweepstakes classes, Stabling, Camping, Ground Levy or Catalogue.

Send Entries to:

The NZ Miniature Horse National Titles Show

Penny Carmody

russ.pennycarmody@gmail.com

Emailed Entries are accepted but must be on an official entry form, and fees must be paid online (with confirmation of payment provided). Any additional enquiries to: Penny Carmody

Drug testing - Has been approved for the National Titles Show, any testing will be done under Show Rule **"G08.01 - Drug Testing"**.

Refunds - no refunds will be given without a current Veterinarian or Medical Professionals certificate. No more than 70% of total fees will be refunded, and above certificates must be received by the Show Manager prior to the commencement of the first class of the show. Stabling fees will be refunded in full if stables are reallocated by show management.

Measuring of Horses - Measuring will be available at the show at allocated times only. There will be **no** measuring outside of the allocated times. Please complete the measuring form and attach it with your entries.

There will be a charge of **\$5 (GST Inc.)** per horse. Please try and get your horses measured before this show - contact your NZMHA Regional Delegate for measuring information.

Please note - Height Verification is required for foals, yearlings and 2-year-olds. Times for height verification will be available via the NZMHA website prior to the show. If after being Height Verified, and after the beginning of the National Show, there is a question regarding a horse's height, a protest must be lodged and the correct procedure for a protest must be followed.

If the horse is verified over its height for age class, the horse can/must be officially measured and be able to be re-classed to the right height for age class.

Holding Area - IMPORTANT: Horses will be called into the arena to be presented for judging in order of back numbers. To ensure the smooth running of the show Competitors must be in the collection area within 3 minutes of the last Competitor of the previous class entering the show ring. The gate steward will exclude later competitors from competition in that class. This includes Champions and Supremes. Horses from the class immediately preceding are excluded from this requirement. The Gate Steward must be informed if a halter break is required, or the gate will not be held.

GENERAL

Back Numbers - Are to be worn on the back - enter the ring in Back Number order.

Once entered, no changes may be made to entries except under the following circumstances:

- Horses entered as Cat A and measured in excess of Height for Age for Cat A prior to the judging of the first class on the first day of competition will be moved to the corresponding classes on Cat B
- Where the horse entered for handler related classes (Best Presented/Showmanship/Whip) is scratched from shows prior to the first class on the first day of competition another horse (already catalogued) may be substituted.
- Horses/Exhibitors entered in Novice classes who upgrade to Open prior to the Show will be moved to Open.

Novice Handlers and Novice Horses - Cards are required to be lodged with the show Management prior to competition

The organisers reserve the right to split/combine/cancel classes where entries warrant it.

ALL Horses, including foals MUST have a current NZMHA Height Certificate in Accordance with the NZMHA Show Rules

Stables - Are available and every endeavour will be made to accommodate exhibitors to their best convenience. All Stallions must be stabled.

\$25.00 per stable/night

\$50 long term stay (2 or more nights)

A bond of \$20 per stable is required for the duration of your stay, this will be refunded on inspection, once the stables are cleaned.

NOTE:

- Nominate Stable Requirements on the Entry Form
- Please Ensure you clean out the stables before your departure, if not cleaned, you will not get your bond refunded
- Please keep the stable area clean at all times by picking up all horse manure and rubbish
- Please do not leave your horses tied up, or left unattended outside the stables or yards.

Workout - The National Show Workout will be used

Catering - Professional catering will be available on site all four days

Errors & Omissions - Should there be a conflict between this schedule and the NZMHA Show Rules or Constitution then this schedule shall **not** prevail. Please bring any such error or omission to the attention of the show organisers so it can be rectified.

Time Out/ Rule Check - Will apply and will be attached to the back of the show catalogue.

Disclaimer

ALL Horses, Exhibitors and spectators enter the grounds at their own risk. The organisers and associated people/organisations are not responsible for any damage, injury or loss that may occur.

Whilst every care has been taken to ensure the safety of the grounds and equipment the responsibility for ensuring individual safety of persons and property rests with the owner and the exhibitor/guardian, and NZMHA will not be held liable for any loss or injury incurred. By entering the show, the owner and or exhibitor/guardian indemnifies NZMHA, the NZMHA council and the Show Staff from any and all liability for damage/injury caused as a result of the owner and

or the exhibitor/guardian or their horses' actions or inactions. All youth under 18 years, whether they are competing or not are to be under direct adult supervision whilst on the show grounds.

Dogs are not permitted on the grounds

NOTICE

Conduct of a member, an exhibitor, trainer owner or spectator of an unsportsmanlike, abusive or detrimental nature will not be tolerated by the show management: including but not limited to threatening, abusive or intimidating conduct (physical, verbal or written) towards any show official, fellow exhibitor or any other person.

Any person(s) guilty of such conduct should be reported immediately to the Show management. Show Management reserves the right to request the person(s) concerned to leave the show and the show venue.

NZMHA PERPETUAL TROPHIES

Please return these trophies no later than 10th March 2026

Contact Penny Carmody for Delivery instructions

STALL DECORATION COMPETITION

We are encouraging competitors to share in the festivities of Nationals by decorating the stall area allocated to you in your stable block!

Take the time to enjoy the company of those around you and fellow exhibitors!



2026 New Zealand Miniature Horse National Show

FRIDAY 3RD APRIL 2026 – 9AM

- In accordance with Rule 24 of NZMHA's OFFICIAL RULE BOOK (CONSTITUTION AND RULES) and Rule G03.01 of NZMHA's OFFICIAL SHOW RULE BOOKLET 2023/2024 where a horse is leased, provided that notice of registration of the lease has been received at the office of the Registrar and all requirements thereof met at the time of entry to the show the lessee shall be treated as if they are the "Owner" of the horse for the purposes of these classes

FUTURITY - CAT A

- Foal/Weanling must be nominated and nomination fee paid by February 28

CATEGORY A (1 JUDGE)

- F301** New Zealand National Champion Foal/Weanling Filly Futurity Category A
- F302** New Zealand National Champion Foal/Weanling Colt Futurity Category A
- F303** New Zealand National Champion Yearling Filly Futurity Category A
- F304** New Zealand National Champion Yearling Colt Futurity Category A

SUPREME FUTURITY HALTER CHAMPION CATEGORY A

(All First-place winners to present)

Sponsored by Bayview Miniatures

JUNIOR GELDING SIGNATURE CHAMPIONSHIP – CAT A

- Open to Foal and Yearling Geldings who have been nominated for the Futurity Competition.
- Placings and Prize Money 1st – 3rd

CATEGORY A (1 JUDGE)

- GSC01** New Zealand National Champion and Reserve New Zealand National Champion Foal/Weanling Gelding Signature Championship
- GSC02** New Zealand National Champion and Reserve New Zealand National Champion Yearling Gelding Signature Championship

Sponsored by Kadali Farms

BREEDERS AWARD OF MERIT - CAT A

- The horse must be exhibited by its Breeder, who shall be the registered Breeder as appears on the horse's NZMHA Registration Certificate.
- Awards to 5th place

CATEGORY A (3 JUDGES)

- B201** New Zealand National Champion and Reserve New Zealand National Champion Breeders Award of Merit (A)

FUTURITY – CAT B

- Foal/Weanling must be nominated and nomination fee paid by February 28

CATEGORY B (1 JUDGE)

- F305** New Zealand Champion Foal/Weanling Filly Futurity Category B
- F306** New Zealand National Champion Foal/Weanling Colt Futurity Category B
- F307** New Zealand National Champion Yearling Filly Futurity Category B
- F308** New Zealand National Champion Yearling Colt Futurity Category B

SUPREME FUTURITY HALTER CHAMPION CATEGORY B

(All First-place winners to present)

Sponsored by Affinity Equine

JUNIOR GELDING SIGNATURE CHAMPIONSHIP – CAT B

- Open to Foal and Yearling Geldings who have been nominated for the Futurity Competition.
- Placings and Prize Money 1st – 3rd

CATEGORY A (1 JUDGE)

GSC03 New Zealand National Champion and Reserve New Zealand National Champion
Foal/Weanling Gelding Signature Championship

GSC04 New Zealand National Champion and Reserve New Zealand National Champion
Yearling Gelding Signature Championship

Sponsored by Kadali Farms

BREEDERS AWARD OF MERIT - CAT B

- The horse must be exhibited by its Breeder, who shall be the registered Breeder as appears on the horse's NZMHA Registration Certificate.
- Awards to 5th place

CATEGORY B (3 JUDGES)

B202 New Zealand National Champion and Reserve New Zealand National Champion
Breeders Award of Merit (B)

BREEDERS SHOWCASE - CAT A & B

(3 Judges)

B203 New Zealand National Champion and Reserve New Zealand National Champion
Three by One Owner

- *A group of three horses with exactly the same ownership details as recorded on their NZMHA Registration Certificates and/or any Lease horse where the lease has been lodged with the NZMHA registrar.*
- *At least one of the horses must be exhibited by the Registered Owner*
- *Category A and B combined*
- *Awards to 5th place*

B204 New Zealand National Champion and Reserve New Zealand National Champion
Stud Award

- *Three horses with the same Stud name, any owner/lessee*
- *Entry to be made by owners of stud name*
- *Category A and B combined*

PROGENY CLASSES - CAT A & B

(3 Judges)

- Judged with emphasis on the reproductive likeness, uniformity, quality of breed characteristics and conformation **excluding colour**
- Either sex of progeny/offspring may be shown
- Limited to one entry per nominated sire or dam
- One number is issued to each group of progeny/offspring
- Entry number to be placed on the lead exhibitor in the group
- The owner/lessee of the nominated Sire or Dam must give signed permission on entry
- Category A and B Combined
- Awards to 5th place

- B205** New Zealand National Champion and Reserve New Zealand National Champion Get of Sire
- Minimum of two and a maximum of 3 get of the sire per entry
- B206** New Zealand National Champion and Reserve New Zealand National Champion Produce of Dam
- Two progeny of the dam per entry

Youth classes to follow Breeders classes – no earlier than 1pm

YOUTH HALTER

Note: Name of the Actual Youth Handler must be recorded on the entry form & only one combination A or B can be Nominated for All Around Youth Awards.

CATEGORY A BEST PRESENTED

- Y100** New Zealand National Champion Best Presented Horse & Junior Youth Handler
5 years to 8 years
- Y101** New Zealand National Champion Best Presented Horse & Intermediate Youth Handler
9 years to 12 years
- Y102** New Zealand National Champion Best Presented Horse & Senior Youth Handler
13 years and over, but under 18 years

CATEGORY B BEST PRESENTED

- Y103** New Zealand National Champion Best Presented Horse & Junior Youth Handler
5 years to 8 years
- Y104** New Zealand National Champion Best Presented Horse & Intermediate Youth Handler
9 years to 12 years
- Y105** New Zealand National Champion Best Presented Horse & Senior Youth Handler
13 years and over, but under 18 years

CATEGORY A - YOUTH HANDLER

- Y106** New Zealand National Champion Horse & Junior Youth Handler
5 years to 8 years
- Y107** New Zealand National Champion Horse & Intermediate Youth Handler
9 years to 12 years
- Y108** New Zealand National Champion Horse & Senior Youth Handler
13 years and over, but under 18

CATEGORY B - YOUTH HANDLER

- Y109** New Zealand National Champion Horse & Junior Youth Handler
5 years to 8 years
- Y110** New Zealand National Champion Horse & Intermediate Youth Handler
9 years to 12 years
- Y111** New Zealand National Champion Horse & Senior Youth Handler
13 years and over, but under 18

YOUTH SHOWMANSHIP

CATEGORY A - YOUTH SHOWMANSHIP CLASSES

- Y112** New Zealand National Champion Senior Youth Showmanship
13 years & over, but under 18 years
- Y113** New Zealand National Champion Intermediate Youth Showmanship
9 years to 12 years

Y114 New Zealand National Champion Junior Youth Showmanship
5 years to 8 years

New Zealand National Grand Champion & Reserve New Zealand National Grand Champion Youth Showmanship

(Awarded on scores from classes Y112, Y113 & Y114)

CATEGORY B - YOUTH SHOWMANSHIP CLASSES

Y115 New Zealand National Champion Senior Youth Showmanship
13 years & over, but under 18 years

Y116 New Zealand National Champion Intermediate Youth Showmanship
9 years to 12 years

Y117 New Zealand National Champion Junior Youth Showmanship
5 years to 8 years

New Zealand National Grand Champion & Reserve New Zealand National Grand Champion Youth Showmanship

(Awarded on scores from classes Y115, Y116 & Y117)

30 Minute Break to warm up for Harness

YOUTH HARNESS

YOUTH HARNESS - CAT A

To enter these youth harness classes any new combination of horse/driver must have competed in at least one NZMHA show in the last six months. Driver must compete in a regulation yellow tagged helmet.

Y118 New Zealand National Champion Best Presented Cat A Horse, Harness, Vehicle & Youth Driver

YOUTH - WHIP

Drivers can drive in either a Single Pleasure or Country Pleasure Cart

Y119 New Zealand National Champion Youth to Drive - Under 18 years

YOUTH - SINGLE PLEASURE DRIVING

Y120 New Zealand National Champion Single Pleasure Cat A Driving Youth Driver

YOUTH - COUNTRY PLEASURE DRIVING

Y121 New Zealand National Champion Country Pleasure Cat A Driving & Youth Driver

10 Minute Break – Warm up / Gear Change

YOUTH - ROADSTER DRIVING

Y122 New Zealand National Champion A Roadster Driving & Youth Driver

30 Minute Break to warm up for Youth Cat B Harness

YOUTH HARNESS - CAT B

To enter these youth harness classes any new combination of horse/driver must have competed in at least one NZMHA show in the last six months.

Y123 New Zealand National Champion Best Presented Cat B Horse, Harness, Vehicle & Youth Driver

YOUTH - WHIP

Drivers can drive in either a Single Pleasure or Country Pleasure Cart

Y124 New Zealand National Champion Youth to Drive - Under 18 years

YOUTH - SINGLE PLEASURE DRIVING

Y125 New Zealand National Champion Single Pleasure Cat B Driving Youth Driver

YOUTH – COUNTRY PLEASURE DRIVING

Y126 New Zealand National Champion Country Pleasure Cat B Driving & Youth Driver

10 Minute Break – Warm up / Gear Change

YOUTH - ROADSTER DRIVING

Y127 New Zealand National Champion B Roadster Driving & Youth Driver

YOUTH TRAIL

- Horse may only attempt the course once
- Horse can only enter either Junior, Intermediate or Senior Youth
- Horse may not be used by more than one handler
- Horses must be a minimum of 24 months of age to compete in Trail

YOUTH TRAIL CAT A

Y128 New Zealand National Champion Trail at Halter - Senior Youth
13 years & over, but under 18 years

Y129 New Zealand National Champion Trail at Halter – Intermediate Youth - 9 years to 12 years

Y130 New Zealand National Champion Trail at Halter - Junior Youth - 5 years to 12 years

**New Zealand National Grand Champion & Reserve New Zealand National Grand Champion
Trail at Halter - Category A – Youth**

(Awarded based on scores from classes Y128, Y129 & Y130)

YOUTH TRAIL CAT B

Y131 New Zealand National Champion Trail at Halter - Senior Youth
13 years & over, but under 18 years

Y132 New Zealand National Champion Trail at Halter – Intermediate Youth - 9 years to 12 years

Y133 New Zealand National Champion Trail at Halter - Junior Youth - 5 years to 12 years

**New Zealand National Grand Champion & Reserve New Zealand National Grand Champion
Trail at Halter - Category B – Youth**

(Awarded based on scores from classes Y131, Y132 & Y133)

YOUTH HUNTER

- Horse may only attempt the course once
- Horse can only enter either Intermediate or Senior Youth
- Horse may not be used by more than one handler
- Horses must be a minimum actual age of 3 years to compete in Hunter

YOUTH HUNTER - CATEGORY A

Y134 New Zealand National Champion Hunter & Intermediate Youth Handler
9 years to 12 years

Y135 New Zealand National Champion Hunter & Senior Youth Handler
13 years & over, but under 18 years

**New Zealand National Grand Champion & Reserve New Zealand National Grand Champion
Hunter Category A – Youth**

(Awarded based on scores from classes Y134 & Y135)

YOUTH HUNTER - CATEGORY B

Y136 New Zealand National Champion Hunter & Intermediate Youth Handler
9 years to 12 years

Y137 New Zealand National Champion Hunter & Senior Youth Handler
13 years & over, but under 18 years

**New Zealand National Grand Champion & Reserve New Zealand National Grand Champion
Hunter Category B – Youth**
(Awarded based on scores from classes Y136 & Y137)

SATURDAY 4TH APRIL 2026 – 8.30AM

HARNES – CAT A

BEST PRESENTED

1 New Zealand National Champion Best Presented Horse, Harness, Vehicle and Driver

WHIP

Drivers can drive in either a Single Pleasure or Country Pleasure Cart

2 New Zealand National Champion Open to Drive - No Youth Drivers

3 New Zealand National Champion Novice (0-6 wins) to Drive - No Youth Drivers

**New Zealand National Grand Champion and Reserve New Zealand National Grand
Champion Whip Category A**

(Chosen from 1st and 2nd placegetters in classes 2 and 3)

SINGLE PLEASURE DRIVING

Horses may enter only one class

4 New Zealand National Champion Single Pleasure Driving - Open

5 New Zealand National Champion Single Pleasure Driving - Novice (0-6 wins)

**New Zealand National Grand Champion and Reserve New Zealand National Grand
Champion Single Pleasure Driving Category A**

(Chosen from 1st and 2nd placegetters in classes 4 and 5)

COUNTRY PLEASURE DRIVING

Horses may enter only one class

6 New Zealand National Champion Country Pleasure Driving - Open

7 New Zealand National Champion Country Pleasure Driving - Novice (0-6 wins)

**New Zealand National Grand Champion and Reserve New Zealand National Grand
Champion Country Pleasure Driving Category A**

(Chosen from 1st and 2nd placegetters in classes 6 and 7)

10 Minute Break – Warm up / Gear Change

ROADSTER DRIVING

Horses may enter only one class

8 New Zealand National Champion Roadster Driving - Open

9 New Zealand National Champion Roadster Driving - Novice (0-6 wins)

**New Zealand National Grand Champion and Reserve New Zealand National Grand
Champion Roadster Driving Category A**

(Chosen from 1st and 2nd placegetters in classes 8 and 9)

45 Minute Break

HARNESS – CAT B

BEST PRESENTED

10 New Zealand National Champion Best Presented Horse, Harness, Vehicle and Driver

WHIP

Drivers can drive in either a Single Pleasure or Country Pleasure Cart

11 New Zealand National Champion Open to Drive - No Youth Drivers

12 New Zealand National Champion Novice (0-6 wins) to Drive - No Youth Drivers

**New Zealand National Grand Champion and Reserve New Zealand National Grand
Champion Whip Category B**

(Chosen from 1st and 2nd placegetters in classes 11 and 12)

SINGLE PLEASURE DRIVING

Horses may enter only one class

13 New Zealand National Champion Single Pleasure Driving - Open

14 New Zealand National Champion Single Pleasure Driving - Novice (0-6 wins)

**New Zealand National Grand Champion and Reserve New Zealand National Grand
Champion Single Pleasure Driving Category B**

(Chosen from 1st and 2nd placegetters in classes 13 and 14)

COUNTRY PLEASURE DRIVING

Horses may enter only one class

15 New Zealand National Champion Country Pleasure Driving - Open

16 New Zealand National Champion Country Pleasure Driving - Novice (0-6 wins)

**New Zealand National Grand Champion and Reserve New Zealand National Grand
Champion Country Pleasure Driving Category B**

(Chosen from 1st and 2nd placegetters in classes 15 and 16)

10 Minute Break – Warm up / Gear Change

ROADSTER DRIVING

Horses may enter only one class

17 New Zealand National Champion Roadster Driving - Open

18 New Zealand National Champion Roadster Driving - Novice (0-6 wins)

**New Zealand National Grand Champion and Reserve New Zealand National Grand
Champion Roadster Driving Category B**

(Chosen from 1st and 2nd placegetters in classes 17 and 18)

TRAIL – CAT A

- Horse may only attempt the course once
- Trail A – Horse can only enter 1 of classes 19 and 20
- Horses must be a minimum of 24 months of age to compete in trail classes

TRAIL AT HALTER – CATEGORY A

19 New Zealand National Champion Trail at Halter Horse - Open – Category A

20 New Zealand National Champion Trail at Halter Horse - Novice – Category A

New Zealand National Grand Champion and Reserve New Zealand National Grand Champion Trail at Halter Horse - Category A

(Chosen based on scores from classes 19 and 20)

TRAIL – CAT B

- Horse may only attempt the course once
- Trail A – Horse can only enter 1 of classes 21 and 22
- Horses must be a minimum of 24 months of age to compete in trail classes

TRAIL AT HALTER – CATEGORY B

21 New Zealand National Champion Trail at Halter Horse - Open – Category B

22 New Zealand National Champion Trail at Halter Horse - Novice – Category B

New Zealand National Grand Champion and Reserve New Zealand National Grand Champion Trail at Halter Horse - Category B

(Chosen based on scores from classes 21 and 22)

HUNTER – CAT A

- Hunter A - Horse can only enter 1 of classes 23 and 24
- Horses must be a minimum of 36 months for hunter.

HUNTER – CATEGORY A

23 New Zealand National Champion Hunter 3 Years and Over - Open - No Novices

24 New Zealand National Champion Hunter 3 Years and Over - Novice (0-6 wins)

New Zealand National Grand Champion and Reserve New Zealand Grand Champion Hunter Category A

(Chosen based on scores from classes 23 and 24)

HUNTER – CAT B

- Hunter A - Horse can only enter 1 of classes 25 and 26
- Horses must be a minimum of 36 months for hunter.

HUNTER – CATEGORY B

25 New Zealand National Champion Hunter 3 Years and Over - Open - No Novices

26 New Zealand National Champion Hunter 3 Years and Over - Novice (0-6 wins)

New Zealand National Grand Champion and Reserve New Zealand Grand Champion Hunter Category B

(Chosen based on scores from classes 25 and 26)

NEW ZEALAND NATIONAL SUPREME PERFORMANCE HORSE CATEGORY A

RUNNER UP NEW ZEALAND NATIONAL SUPREME PERFORMANCE HORSE CATEGORY A

NEW ZEALAND NATIONAL SUPREME PERFORMANCE HORSE CATEGORY B

RUNNER UP NEW ZEALAND NATIONAL SUPREME PERFORMANCE HORSE CATEGORY B

Points for each Horse will be awarded from the following classes: (best results will be counted)

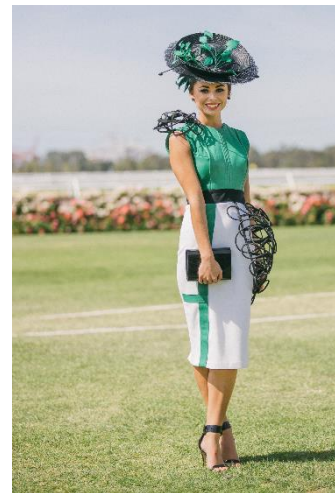
- ONE TRAIL AT HALTER CLASS
- ONE DRIVING CLASS (Single Pleasure Driving, Country Pleasure Driving or Roadster Driving)
- ONE JUMPING CLASS (Hunter)

SATURDAY 4TH APRIL 2026 – Evening

FASHION IN THE FIELD

FF01 - Fashion in the Field 17 years and Under

FF02 - Fashion in the Field 18 years and Over



FANCY DRESS

- All Ages
- All Entries for Fancy Dress will be Taken on the Day.

LIBERTY

- 2-minute routine and then 1.5minutes to catch
- Open to any NZMHA registered horse, does not need to have a current height cert, but must be height verified for the correct section.
- Foal/Weanlings are not eligible to enter
- \$15 per horse entry fee - 100% of money received to be paid out.
- Workout Music Must Be Provided – Date required to be confirmed



L01 - Cat A Liberty

L02 - Cat B Liberty

SUNDAY 5TH APRIL 2026 – 8.30am

CATEGORY A HALTER

BEST PRESENTED

- 27 New Zealand National Champion Best Presented Horse and Adult Handler - 18 years and over

FILLY

- 28 New Zealand National Champion Foal/Weanling Filly 28" and under (born after 1 August 2023)
29 New Zealand National Champion Foal/Weanling Filly over 28" and up to and including 30"
(born after 1 August 2023)

New Zealand National Grand Champion and Reserve New Zealand National Grand Champion Foal/Weanling Filly Category A

(Chosen from 1st and 2nd placegetters in classes 28 and 29)

- 30 New Zealand National Champion Yearling Filly 30" and under
31 New Zealand National Champion Yearling Filly over 30" and up to and including 32"

New Zealand National Grand Champion and Reserve New Zealand National Grand Champion Youngstock Filly Category A

(Chosen from 1st and 2nd place getters in classes 30 and 31)

MARE

- 32 New Zealand National Champion Junior Mare 2 years
33 New Zealand National Champion Junior Mare 3 years

New Zealand National Grand Champion and Reserve New Zealand National Grand Champion Junior Mare Category A

(Chosen from 1st and 2nd placegetters in classes 32 and 33)

- 34 New Zealand National Champion Senior Mare 4 and 5 years
35 New Zealand National Champion Senior Mare 6 years and over

New Zealand National Grand Champion and Reserve New Zealand National Grand Champion Senior Mare Category A

(Chosen from 1st and 2nd placegetters in classes 34 and 35)

COLT

- 36 New Zealand National Champion Foal/Weanling Colt 28" and under (born after 1 August 2023)

37 New Zealand National Champion Foal/Weanling Colt Over 28" and up to and including 30"
(Born after 1 August 2023)

**New Zealand National Grand Champion and Reserve New Zealand National Grand
Champion Foal/Weanling Colt Category A**

(Chosen from 1st and 2nd place getters in classes 36 and 37)

38 New Zealand National Champion Yearling Colt 30" and under

39 New Zealand National Champion Yearling Colt Over 30" and up to and including 32"

**New Zealand National Grand Champion and Reserve New Zealand National Grand
Champion Youngstock Colt Category A**

(Chosen from 1st and 2nd place getters in classes 38 and 39)

GELDING

40 New Zealand National Champion Foal/Weanling Gelding 28" and under (born after 1 August 2023)

41 New Zealand National Champion Foal/Weanling Gelding Over 28" and up to and including 30"
(born after 1 August 2023)

**New Zealand National Grand Champion and Reserve New Zealand National Grand
Champion Foal/Weanling Gelding Category A**

(Chosen from 1st and 2nd place getters in classes 40 and 41)

42 New Zealand National Champion Yearling Gelding 30" and under

43 New Zealand National Champion Yearling Gelding Over 30" and up to and including 32"

**New Zealand National Grand Champion and Reserve New Zealand National Grand
Champion Youngstock Gelding Category A**

(Chosen from 1st and 2nd placegetters in classes 42 and 43)

44 New Zealand National Champion Junior Gelding 2 years

45 New Zealand National Champion Junior Gelding 3 years

**New Zealand National Grand Champion and Reserve New Zealand National Grand
Champion Junior Gelding Category A**

(Chosen from 1st and 2nd place getters in classes 44 and 45)

46 New Zealand National Champion Senior Gelding 4 and 5 years

47 New Zealand National Champion Senior Gelding 6 years and over

**New Zealand National Grand Champion and Reserve New Zealand National Grand
Champion Senior Gelding Category A**

(Chosen from 1st and 2nd place getters in classes 46 and 47)

STALLION

48 New Zealand National Champion Junior Stallion 2 years

49 New Zealand National Champion Junior Stallion 3 years

**New Zealand National Grand Champion and Reserve New Zealand National Grand
Champion Junior Stallion Category A**

(Chosen from 1st and 2nd place getters in classes 48 and 49)

50 New Zealand National Champion Senior Stallion 4 and 5 years

51 New Zealand National Champion Senior Stallion 6 years and over

New Zealand National Grand Champion and Reserve New Zealand National Grand Champion Senior Stallion Category A

(Chosen from 1st and 2nd placegetters in classes 50 and 51)

10 Minute Break

NEW ZEALAND NATIONAL SUPREME JUNIOR CATEGORY A

RUNNER UP NEW ZEALAND NATIONAL SUPREME JUNIOR CATEGORY A

(Chosen from all National Grand Champions 3 years and under)

NEW ZEALAND NATIONAL SUPREME SENIOR CATEGORY A

RUNNER UP NEW ZEALAND NATIONAL SUPREME SENIOR CATEGORY A

(Chosen from all National Grand Champions 4 years and over)

30 Minute Break

HERITAGE - CATEGORY A

H1 New Zealand National Champion and Reserve New Zealand National Champion Young Stock Heritage Horse Category A: 1 year and under; fillies, geldings, and colts in the same class

H2 New Zealand National Champion and Reserve New Zealand National Champion Junior: 2-3 Years Heritage Horse Category A; fillies, geldings and colts in the same class

H3 New Zealand National Champion and Reserve New Zealand National Champion Senior Mare - 4 Years and over Heritage Horse Category A

H4 New Zealand National Champion and Reserve New Zealand National Champion Senior Gelding or Stallion - 4 Years and over Heritage Horse Category A

New Zealand National Grand Champion and Reserve New Zealand National Grand Champion Heritage Horse Category A

(Chosen from 1st and 2nd place getters in classes H1, H2, H3 and H4)

H5 New Zealand National Champion Solid Colour Heritage Horse Category A

H6 New Zealand National Champion Multi Colour Heritage Horse Category A

New Zealand National Grand Champion and Reserve New Zealand National Grand Champion Heritage Colour Horse Category A

(Chosen from 1st and 2nd place getters in classes H5 and H6)

H7 New Zealand National Champion Best Movement Heritage Horse Category A

COLOUR - CATEGORY A

(Excluding Heritage)

52 New Zealand National Champion Solid Colour eg. Black, Brown, Chestnut, Grey, Roan and Other

53 New Zealand National Champion Solid Colour eg. Silver Chocolate, Silver Bay, Silver Chocolate etc

54 New Zealand National Champion Solid Colour – Dilute eg. Palomino, Dun, Buckskin, Cremello, Perlino, Champagne etc.

New Zealand National Grand Champion and Reserve New Zealand National Grand Champion Solid Colour Horse Category A

(Chosen from 1st and 2nd place getters in classes 52, 53 and 54)

55 New Zealand National Champion Multi Colour – Appaloosa and Pintaloosa

56 New Zealand National Champion Multi Colour – Minimal Pattern Multi Colour

57 New Zealand National Champion Multi Colour - All Other Multi Colour

New Zealand National Grand Champion and Reserve New Zealand National Grand Champion Multi Colour Horse Category A

(Chosen from 1st and 2nd place getters in classes 55, 56, 57)

MOVEMENT - CATEGORY A

58 New Zealand National Champion Best Movement – 1 year and under (excludes Geldings)

59 New Zealand National Champion Best Movement – 2 years and over (excludes Geldings)

60 New Zealand National Champion Best Movement – Gelding 1 year and under

61 New Zealand National Champion Best Movement – Gelding 2 years and over

NZ BRED - CATEGORY A

- *The horse, to be eligible to be shown in these classes, both Sire and Dam must have been bred in New Zealand (not in Utero Imports)*

NZ1 Youngstock - 1 year and under; Fillies, Geldings and Colts in the same class

NZ2 Junior - 2- & 3-Year-Old; Fillies, Geldings and Stallions in the same class

NZ3 Senior - 4 and Older; Mares, Geldings and Stallions in the same class

New Zealand National Grand Champion and Reserve New Zealand National Grand Champion NZ BRED CAT A

(Chosen from 1st place getters in classes NZ1, NZ2 and NZ3)

SHOWMANSHIP - CATEGORY A

62 New Zealand National Champion Adult Showmanship - Novice (0-6 wins) - 18 years and over

63 New Zealand National Champion Adult Showmanship – Open - 18 years and over

New Zealand National Grand Champion and Reserve New Zealand National Grand Champion Adult Showmanship

(Chosen based on scores from classes 62 and 63)

SWEEPSTAKE - CATEGORY A

SS1 Sweepstake Cat A

MONDAY 1st APRIL 2024 – 8.30am

CATEGORY B HALTER

BEST PRESENTED

64 New Zealand National Champion Best Presented Horse and Adult Handler - 18 years and over

FILLY

65 New Zealand National Champion Foal/Weanling Filly 31" and under (born after 1 August 2020)

66 New Zealand National Champion Foal/Weanling Filly Over 31" and up to and including 33"
(born after 1 August 2022)

New Zealand National Grand Champion & Reserve New Zealand National Grand Champion Foal/Weanling Filly Category B

(Chosen from 1st & 2nd place getters in classes 65 & 66)

67 New Zealand National Champion Yearling Filly Over 31" and up to and including 34"

68 New Zealand National Champion Yearling Filly Over 34" and up to and including 36"

New Zealand National Grand Champion & Reserve New Zealand National Grand Champion Youngstock Filly Category B

(Chosen from 1st & 2nd place getters in classes 67 & 68)

MARE

69 New Zealand National Champion Junior Mare 2 years

70 New Zealand National Champion Junior Mare 3 years

New Zealand National Grand Champion & Reserve New Zealand National Grand Champion Junior Mare Category B

(Chosen from 1st & 2nd place getters in classes 69 & 70)

71 New Zealand National Champion Senior Mare 4 years

72 New Zealand National Champion Senior Mare 5 years & over

New Zealand National Grand Champion & Reserve New Zealand National Grand Champion Senior Mare Category B

(Chosen from 1st & 2nd placegetters in classes 71 & 72)

COLT

73 New Zealand National Champion Foal/Weanling Colt 31" and under (born after 1 August 2020)

74 New Zealand National Champion Foal/Weanling Colt Over 31" and up to and including 33"
(born after 1 August 2022)

New Zealand National Grand Champion & Reserve New Zealand National Grand Champion Foal/Weanling Colt Category B

(Chosen from 1st & 2nd place getters in classes 73 & 74)

75 New Zealand National Champion Yearling Colt Over 31" and up to and including 34"

76 New Zealand National Champion Yearling Colt Over 34" and up to and including 36"

**New Zealand National Grand Champion & Reserve New Zealand National Grand Champion
Youngstock Colt Category B**

(Chosen from 1st & 2nd place getters in classes 75 & 76)

GELDING

77 New Zealand National Champion Foal/Weanling Gelding 31" and under (born after 1 August 2020)

78 New Zealand National Champion Foal/Weanling Gelding Over 31" and up to and including 33"
(born after 1 August 2022)

**New Zealand National Grand Champion & Reserve New Zealand National Grand Champion
Foal/Weanling Gelding Category B**

(Chosen from 1st & 2nd place getters in classes 77 & 78)

79 New Zealand National Champion Yearling Gelding Over 31" and up to and including 34"

80 New Zealand National Champion Yearling Gelding Over 34" and up to and including 36"

**New Zealand National Grand Champion & Reserve New Zealand National Grand Champion
Youngstock Gelding Category B**

(Chosen from 1st & 2nd place getters in classes 79 & 80)

81 New Zealand National Champion Junior Gelding 2 years

82 New Zealand National Champion Junior Gelding 3 years

**New Zealand National Grand Champion & Reserve New Zealand National Grand Champion
Junior Gelding Category B**

(Chosen from 1st & 2nd place getters in classes 81 & 82)

83 New Zealand National Champion Senior Gelding 4 years

84 New Zealand National Champion Senior Gelding 5 years & over

**New Zealand National Grand Champion & Reserve New Zealand National Grand Champion
Senior Gelding Category B**

(Chosen from 1st & 2nd place getters in classes 83 & 84)

STALLION

85 New Zealand National Champion Junior Stallion 2 years

86 New Zealand National Champion Junior Stallion 3 years

**New Zealand National Grand Champion & Reserve New Zealand National Grand Champion
Junior Stallion Category B**

(Chosen from 1st & 2nd place getters in classes 85 & 86)

87 New Zealand National Champion Senior Stallion 4 years

88 New Zealand National Champion Senior Stallion 5 years & over

**New Zealand National Grand Champion & Reserve New Zealand National Grand Champion
Senior Stallion Category B**

(Chosen from 1st & 2nd place getters in classes 87 & 88)

10 Minute Break

NEW ZEALAND NATIONAL SUPREME JUNIOR CATEGORY B
RUNNER UP NEW ZEALAND NATIONAL SUPREME JUNIOR CATEGORY B
(Chosen from all National Grand Champions 3 years and under)

NEW ZEALAND NATIONAL SUPREME SENIOR CATEGORY B
RUNNER UP NEW ZEALAND NATIONAL SUPREME SENIOR CATEGORY B
(Chosen from all National Grand Champions 4 years and over)

30 Minute Break

HERITAGE - CATEGORY B

- H8** New Zealand National Champion and Reserve New Zealand National Champion Young Stock Heritage Horse Category B: 1 year and under; fillies, geldings, and colts in the same class
- H9** New Zealand National Champion and Reserve New Zealand National Champion Junior: 2-3 Years Heritage Horse Category B; fillies, geldings and colts in the same class
- H10** New Zealand National Champion and Reserve New Zealand National Champion Senior Mare - 4 Years and over Heritage Horse Category B
- H11** New Zealand National Champion and Reserve New Zealand National Champion Senior Gelding or Stallion - 4 Years and over Heritage Horse Category B

New Zealand National Grand Champion and Reserve New Zealand National Grand Champion Heritage Horse Category B

(Chosen from 1st and 2nd place getters in classes H8, H9, H10 and H11)

- H12** New Zealand National Champion Solid Colour Heritage Horse Category B
- H13** New Zealand National Champion Multi Colour Heritage Horse Category B

New Zealand National Grand Champion and Reserve New Zealand National Grand Champion Heritage Colour Horse Category B

(Chosen from 1st and 2nd place getters in classes H12 and H13)

- H14** New Zealand National Champion Best Movement Heritage Horse Category B

COLOUR - CATEGORY B

(Excluding Heritage)

- 89** New Zealand National Champion Solid Colour eg. Black, Brown, Chestnut, Grey, Roan and Other
- 90** New Zealand National Champion Solid Colour eg. Silver Chocolate, Silver Bay, Silver Chocolate etc
- 91** New Zealand National Champion Solid Colour – Dilute eg. Palomino, Dun, Buckskin, Cremello, Perlino, Champagne etc.

New Zealand National Grand Champion and Reserve New Zealand National Grand Champion Solid Colour Horse Category B

(Chosen from 1st and 2nd place getters in classes 89, 90 and 91)

- 92** New Zealand National Champion Multi Colour – Appaloosa and Pinto
- 93** New Zealand National Champion Multi Colour – Minimal Pattern Multi Colour

94 New Zealand National Champion Multi Colour - All Other Multi Colour

New Zealand National Grand Champion and Reserve New Zealand National Grand Champion Multi Colour Horse Category B

(Chosen from 1st and 2nd place getters in classes 92, 93, 94)

MOVEMENT - CATEGORY B

95 New Zealand National Champion Best Movement – 1 year and under (excludes Geldings)

96 New Zealand National Champion Best Movement – 2 years and over (excludes Geldings)

97 New Zealand National Champion Best Movement – Gelding 1 year and under

98 New Zealand National Champion Best Movement – Gelding 2 years and over

NZ BRED - CATEGORY B

- *The horse, to be eligible to be shown in these classes, both Sire and Dam must have been bred in New Zealand (not in Utero Imports)*

NZ4 Youngstock - 1 year and under; Fillies, Geldings and Colts in the same class

NZ5 Junior - 2- & 3-Year-Old; Fillies, Geldings and Stallions in the same class

NZ6 Senior - 4 and Older; Mares, Geldings and Stallions in the same class

New Zealand National Grand Champion and Reserve New Zealand National Grand Champion NZ BRED CAT B

(Chosen from 1st place getters in classes NZ4, NZ5 and NZ6)

SHOWMANSHIP - CATEGORY B

99 New Zealand National Champion Adult Showmanship - Novice (0-6 wins) - 18 years and over

100 New Zealand National Champion Adult Showmanship – Open - 18 years and over

New Zealand National Grand Champion and Reserve New Zealand National Grand Champion Adult Showmanship

(Chosen based on scores from classes 99 and 100)

SWEEPSTAKE - CATEGORY B

SS2 Sweepstake Cat B

OFFICIAL CLOSING OF THE SHOW AND PRIZE GIVING

BEST ALL-ROUND AWARDS

- **NOTE – These are ALL paid classes (401, 402, 403, 404, 405, 406, 407) and must be entered otherwise points will not be tallied.**
- *Best results will be counted*
- **NOTE - Due to time constraints these awards may not be calculated and presented on the day of the show**

- 401** New Zealand National Champion and Runner-Up New Zealand National Champion Best All Round Horse Category A
- 402** New Zealand National Champion and Runner-Up New Zealand National Champion Best All Round Horse Category B
- 403** New Zealand National Champion and Runner Up New Zealand National Champion Best All Round Heritage Horse Category A (only open to Heritage Horses)
- 404** New Zealand National Champion and Runner Up New Zealand National Champion Best All Round Heritage Horse Category B (only open to Heritage Horses)

Points for the Horse will be awarded from the following classes:

- BREED HALTER CLASS
- COLOUR CLASS
- ONE MOVEMENT CLASS
- ONE TRAIL AT HALTER CLASS
- ONE DRIVING CLASS (*Single Pleasure Driving, Country Pleasure Driving or Roadster Driving*)
- ONE JUMPING CLASS

- 405** New Zealand National Champion and Runner-Up New Zealand National Champion Best All Round Junior Youth

- Youth – 5 years to 8 years
- Category A and B Horses Combined
- Same Youth and Horse Combination
- One entry per Youth

Points will be awarded from the following classes:

- BEST PRESENTED YOUTH CLASS
- HANDLER CLASS
- ONE TRAIL AT HALTER CLASS
- SHOWMANSHIP CLASS

- 406** New Zealand National Champion and Runner-Up New Zealand National Champion Best All Round Intermediate Youth

- Youth – 9 years to 12 years
- Category A and B Horses Combined
- Same Youth and Horse Combination
- One entry per Youth

Points will be awarded from the following classes:

- BEST PRESENTED YOUTH CLASS
- HANDLER CLASS
- ONE TRAIL AT HALTER CLASS
- SHOWMANSHIP CLASS
- ONE DRIVING CLASS (*Single Pleasure Driving, Country Pleasure Driving or Roadster Driving*)
- ONE JUMPING CLASS

- 407** New Zealand National Champion and Runner-Up New Zealand National Champion Best All Round Senior Youth

- Youth – 9 years to 12 years
- Category A and B Horses Combined
- Same Youth and Horse Combination
- One entry per Youth

Points will be awarded from the following classes:

- BEST PRESENTED YOUTH CLASS
- HANDLER CLASS
- ONE TRAIL AT HALTER CLASS
- SHOWMANSHIP CLASS
- ONE DRIVING CLASS (*Single Pleasure Driving, Country Pleasure Driving or Roadster Driving*)

NZMHA acknowledges the Sponsorship and Prizes received from Members and supporters and extends its gratitude and thanks. We would like to thank Bayview Miniatures for the many years of dinners they have provided. If you would be interested in sponsoring these in the future please let Aaron know.

Your generosity has greatly contributed to the success of the show.

New Zealand Miniature Horse Association gratefully acknowledges the assistance of the multitude of volunteers who make The New Zealand National Titles Miniature Horse Show possible.

